



Greater Las Vegas Association of REALTORS® Sept 2019 Statistics

	Single Family Residential Units			Condo/Townhouse Units		
	Sep 19	Change from Aug 19	Change from Sept 18	Sep 19	Change from Aug 19	Change from Sept 18
AVAILABILITY AT END OF PERIOD						
# of available units listed	11,395	-5.6%	+14.6%	2,749	-4.9%	+23.1%
Median list price of available units	\$ 334,000	+0.0%	-0.3%	174,000	+0.6%	+3.6%
Average list price of available units	\$ 488,801	+1.0%	+2.0%	199,807	+1.3%	+4.4%
*AVAILABILITY AT END OF PERIOD						
# of available units listed w/o offers	7,334	-5.6%	+19.3%	1,830	-1.6%	+35.0%
Median list price of available units w/o offers	\$ 349,500	+0.1%	-2.9%	\$ 172,000	+1.2%	+4.2%
Average list price of available units w/o offers	\$ 547,650	+1.1%	-0.3%	\$ 202,169	+0.5%	+4.3%
NEW LISTINGS THIS PERIOD						
# of new listings	3,523	-14.3%	-5.5%	831	-10.6%	-8.2%
Median price of new listings	\$ 324,900	-0.0%	+3.1%	\$ 179,999	+0.2%	+5.9%
Average price of new listings	\$ 400,352	-3.1%	-0.7%	\$ 202,552	-1.1%	+10.7%
UNITS SOLD THIS PERIOD						
# of units sold	2,750	-13.2%	+12.9%	680	-11.3%	+19.5%
Median price of units sold	\$ 310,000	+1.6%	+3.3%	\$ 171,000	-3.4%	+0.6%
Average price of units sold	\$ 361,724	+2.1%	+5.7%	\$ 184,269	-2.7%	+0.7%
TIME ON MARKET FOR UNITS SOLD THIS PERIOD						
	Sep 19	Aug 19	Sep 18	Sep 19	Aug 19	Sep 18
0-30 days	53.9%	52.4%	70.1%	50.7%	48.8%	75.2%
31-60 days	21.6%	22.2%	16.5%	21.5%	22.7%	15.1%
61-90 days	11.4%	11.8%	6.9%	10.4%	13.8%	5.3%
91-120 days	6.7%	5.6%	3.1%	8.4%	6.5%	3.2%
121+ days	6.5%	8.1%	3.3%	9.0%	8.2%	1.2%
TOTAL HOME SALES DOLLAR VALUE FOR UNITS SOLD THIS PERIOD						
	Sep 19	Change from Aug 19	Change from Sept 18	Sep 19	Change from Aug 19	Change from Sept 18
	\$ 994,739,692	-11.4%	+19.4%	\$ 125,303,139	-13.7%	+20.3%

***This category reflects the existing market availability of listings without pending or contingent offers.**

Source: Greater Las Vegas Association of REALTORS®

DISCLAIMER: This data is based on information from the Greater Las Vegas Association of REALTORS® (GLVAR) Multiple Listing Service (MLS). This information is deemed reliable but is not guaranteed. MLS collects, compiles and distributes information about homes listed for sale by its subscribers who are real estate agents. MLS subscription is available to all real estate agents licensed in Nevada, but is not available to the general public. Not all licensed agents subscribe to the MLS. MLS does not include all new homes available or listings from non-MLS agents, nor does it include properties for sale by owner. The territorial jurisdiction of the GLVAR as a member of the National Association of REALTORS® includes Clark, Nye, Lincoln and White Pine Counties, Nevada, and such other areas as from time to time may be allocated to the GLVAR by the Board of Directors of the National Association of REALTORS®.



Greater Las Vegas Association of REALTORS® September 2019 Statistics

Sold Units Statistics by Area (see map)

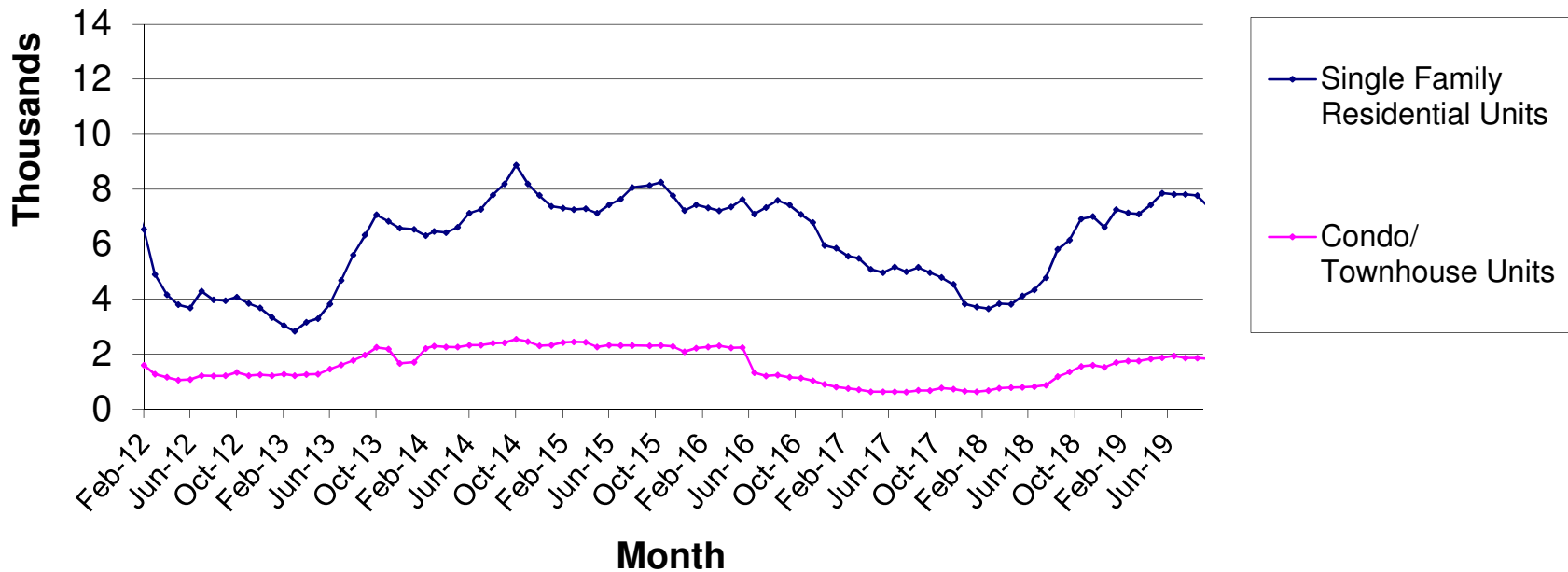
Area	Single Family Residential Units			Condo/Townhouse Units		
	# of units sold	Median Sold Price	Average Sold Price	# of units sold	Median Sold Price	Average Sold Price
101 - North	33	\$199,000	\$207,215	2	\$150,000	\$150,000
102 - North	193	\$330,000	\$358,289	6	\$245,000	\$247,000
103 - North	351	\$290,271	\$280,000	31	\$205,000	\$196,729
201 - East	32	\$193,500	\$173,368	4	\$76,750	\$84,375
202 - East	73	\$219,000	\$205,359	14	\$117,450	\$120,557
203 - East	76	\$207,550	\$217,376	20	\$162,500	\$152,984
204 - East	125	\$228,000	\$215,321	32	\$131,000	\$143,068
301 - South	102	\$201,277	\$201,523	55	\$139,900	\$144,655
302 - South	110	\$230,000	\$215,975	42	\$127,500	\$129,395
303 - South	164	\$294,950	\$308,761	33	\$195,000	\$205,967
401 - North West	27	\$249,000	\$334,863	7	\$110,000	\$116,700
402 - North West	119	\$220,000	\$217,599	29	\$132,500	\$140,131
403 - North West	133	\$247,500	\$247,591	60	\$158,000	\$163,803
404 - North West	169	\$370,000	\$443,531	40	\$257,500	\$271,552
405 - North West	262	\$307,606	\$338,010	28	\$186,250	\$194,485
501 - South West	67	\$273,000	\$300,062	18	\$150,000	\$144,864
502 - South West	161	\$359,000	\$495,873	34	\$191,950	\$228,540
503 - South West	189	\$282,000	\$321,473	71	\$160,000	\$177,150
504 - South West	188	\$314,500	\$343,841	18	\$174,750	\$178,715
505 - South West	176	\$325,000	\$359,998	16	\$249,950	\$244,716
601 - Henderson	61	\$295,000	\$346,272	16	\$192,500	\$204,369
602 - Henderson	121	\$312,000	\$322,966	33	\$195,000	\$207,000
603 - Henderson	59	\$330,000	\$370,243	8	\$249,450	\$269,613
604 - Henderson	42	\$304,000	\$295,377	5	\$155,000	\$169,800
605 - Henderson	92	\$310,000	\$336,285	13	\$190,000	\$192,361
606 - Henderson	227	\$415,000	\$517,611	30	\$281,500	\$273,738
701 - Boulder City	13	\$344,000	\$329,038	4	\$130,500	\$135,750
702 - Boulder City	8	\$326,000	\$327,550	5	\$314,000	\$305,200
800 - Mesquite	2	\$184,325	\$184,325	1	\$131,900	\$131,900
801 - Muddy River (Moapa, Glendale, Logandale, Overton)	10	\$232,500	\$251,490	-	\$0	\$0
802 - Mt. Charleston/Lee Canyon	4	\$427,500	\$416,250	-	\$0	\$0
803 - Indian Springs/Cold Creek	-	\$0	\$0	-	\$0	\$0
804 - Mountain Springs	-	\$0	\$0	-	\$0	\$0
805 - Blue Diamond	-	\$0	\$0	-	\$0	\$0
806 - State Line/Jean/Goodsprings	1	\$260,000	\$260,000	-	\$0	\$0
807 - Sandy Valley	2	\$135,750	\$135,750	-	\$0	\$0
808 - Laughlin	3	\$102,000	\$110,333	3	\$102,000	\$110,333
809 - Other Clark County	3	\$200,000	\$179,167	-	\$0	\$0
810 - Pahrump	85	\$200,000	\$204,106	3	\$95,000	\$91,333
811 - Nye County	-	\$0	\$0	-	\$0	\$0
812 - Lincoln County	3	\$125,000	\$121,667	-	\$0	\$0
813 - Other Nevada	-	\$0	\$0	-	\$0	\$0
814 - Amargosa Valley	1	\$140,000	\$140,000	-	\$0	\$0
815 - Beatty	2	\$52,500	\$52,500	-	\$0	\$0
816 - White Pine County	11	\$110,000	\$135,905	-	\$0	\$0
817 - Searchlight	1	\$210,000	\$210,000	-	\$0	\$0
900 - Outside Nevada	1	\$159,000	\$159,000	-	\$0	\$0

Source: Greater Las Vegas Association of REALTORS®

DISCLAIMER: This data is based on information from the Greater Las Vegas Association of REALTORS® (GLVAR) Multiple Listing Service (MLS). This information is deemed reliable but is not guaranteed. MLS collects, compiles and distributes information about homes listed for sale by its subscribers who are real estate agents. MLS subscription is available to all real estate agents licensed in Nevada, but is not available to the general public. Not all licensed agents subscribe to the MLS. MLS does not include all new homes available or listings from non-MLS agents, nor does it include properties for sale by owner. The territorial jurisdiction of the GLVAR as a member of the National Association of REALTORS® includes Clark, Nye, Lincoln and White Pine Counties, Nevada, and such other areas as from time to time may be allocated to the GLVAR by the Board of Directors of the National Association of REALTORS®.



Availability Without Pending Or Contingent Offers End Of Period

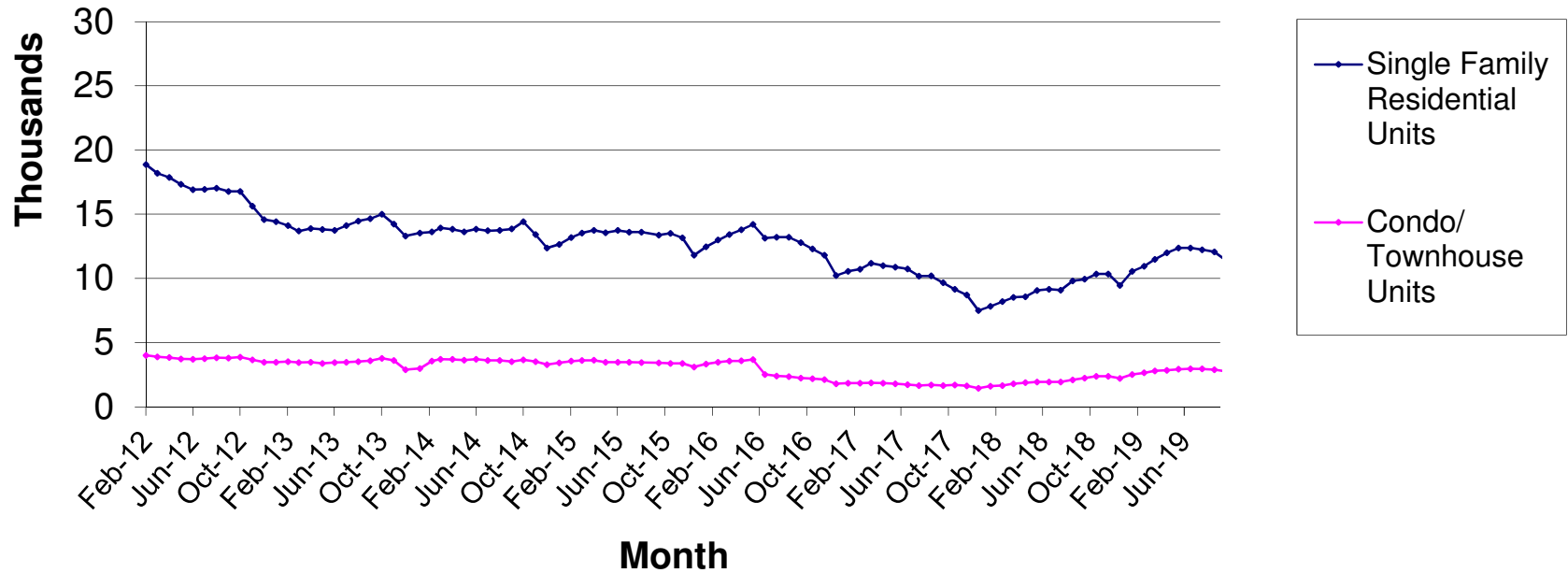


Source: Greater Las Vegas Association of REALTORS®

DISCLAIMER: This data is based on information from the Greater Las Vegas Association of REALTORS® (GLVAR) Multiple Listing Service (MLS). This information is deemed reliable but is not guaranteed. MLS collects, compiles and distributes information about homes listed for sale by its subscribers who are real estate agents. MLS subscription is available to all real estate agents licensed in Nevada, but is not available to the general public. Not all licensed agents subscribe to the MLS. MLS does not include all new homes available or listings from non-MLS agents, nor does it include properties for sale by owner. The territorial jurisdiction of the GLVAR as a member of the National Association of REALTORS® includes Clark, Nye, White Pine and Lincoln Counties, Nevada, and such other areas as from time to time may be allocated to the GLVAR by the Board of Directors of the National Association of REALTORS®.

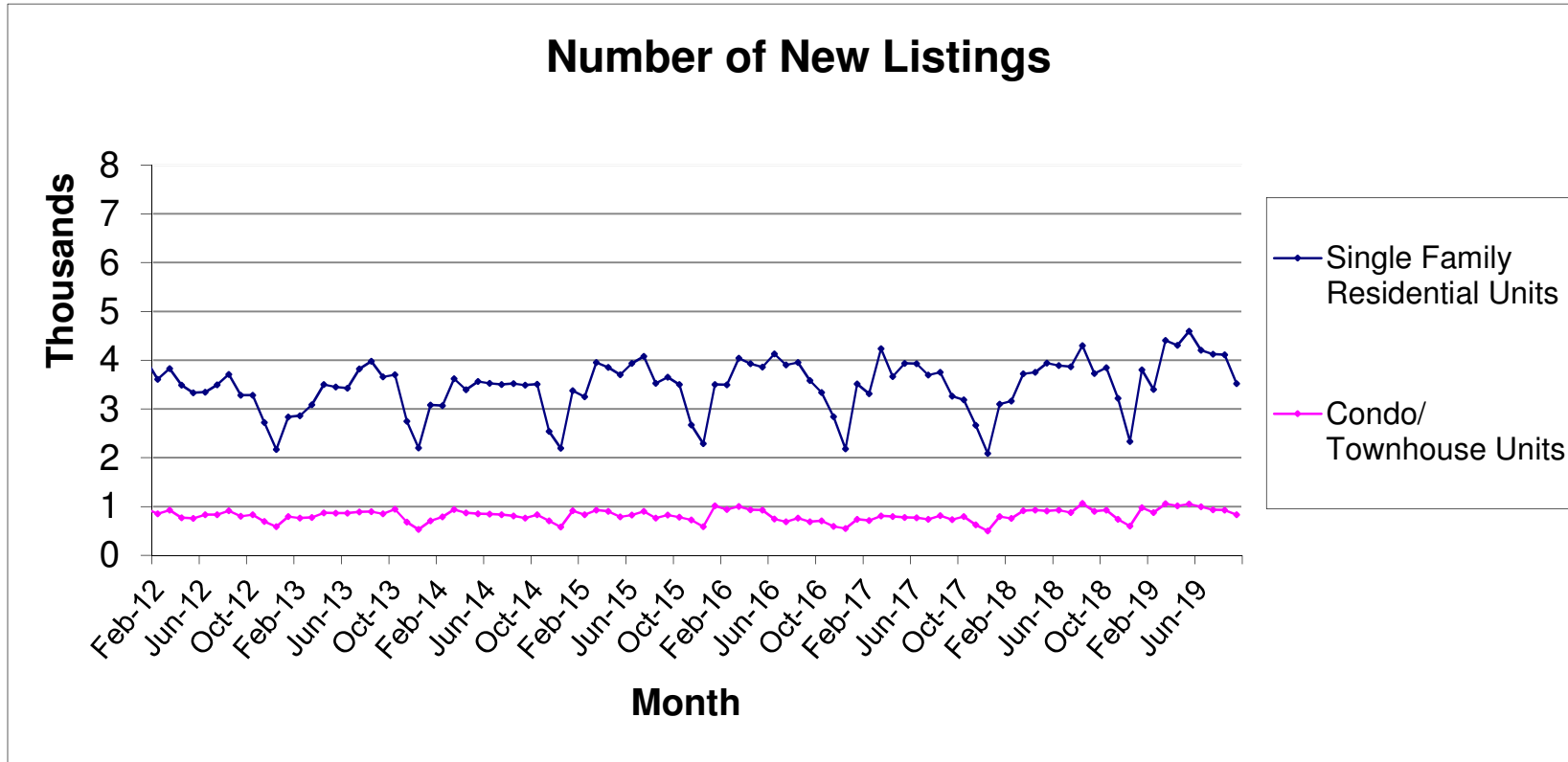


Availability at End of Period



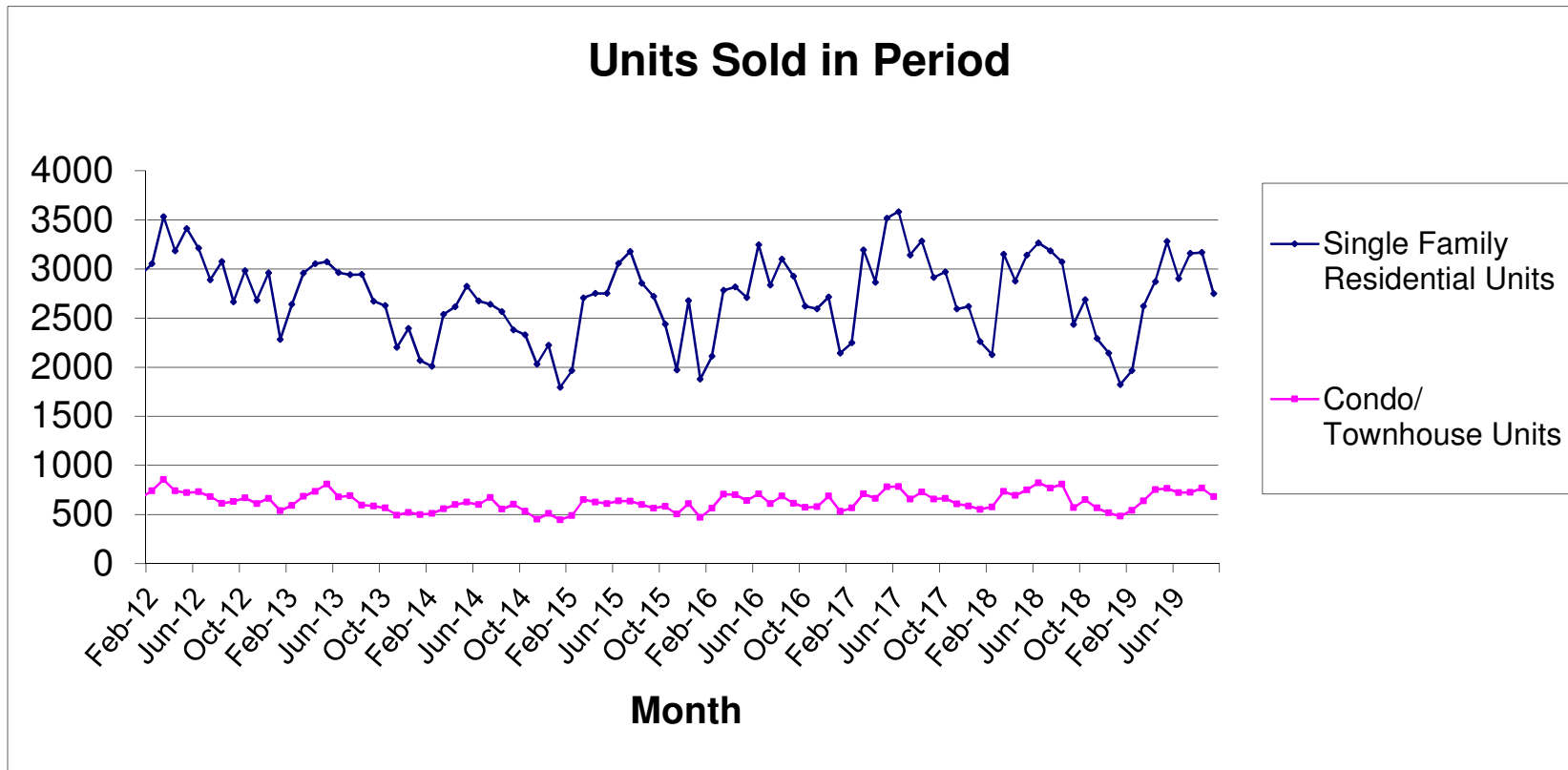
Source: Greater Las Vegas Association of REALTORS®

DISCLAIMER: This data is based on information from the Greater Las Vegas Association of REALTORS® (GLVAR) Multiple Listing Service (MLS). This information is deemed reliable but is not guaranteed. MLS collects, compiles and distributes information about homes listed for sale by its subscribers who are real estate agents. MLS subscription is available to all real estate agents licensed in Nevada, but is not available to the general public. Not all licensed agents subscribe to the MLS. MLS does not include all new homes available or listings from non-MLS agents, nor does it include properties for sale by owner. The territorial jurisdiction of the GLVAR as a member of the National Association of REALTORS® includes Clark, Nye, White Pine and Lincoln Counties, Nevada, and such other areas as from time to time may be allocated to the GLVAR by the Board of Directors of the National Association of REALTORS®.



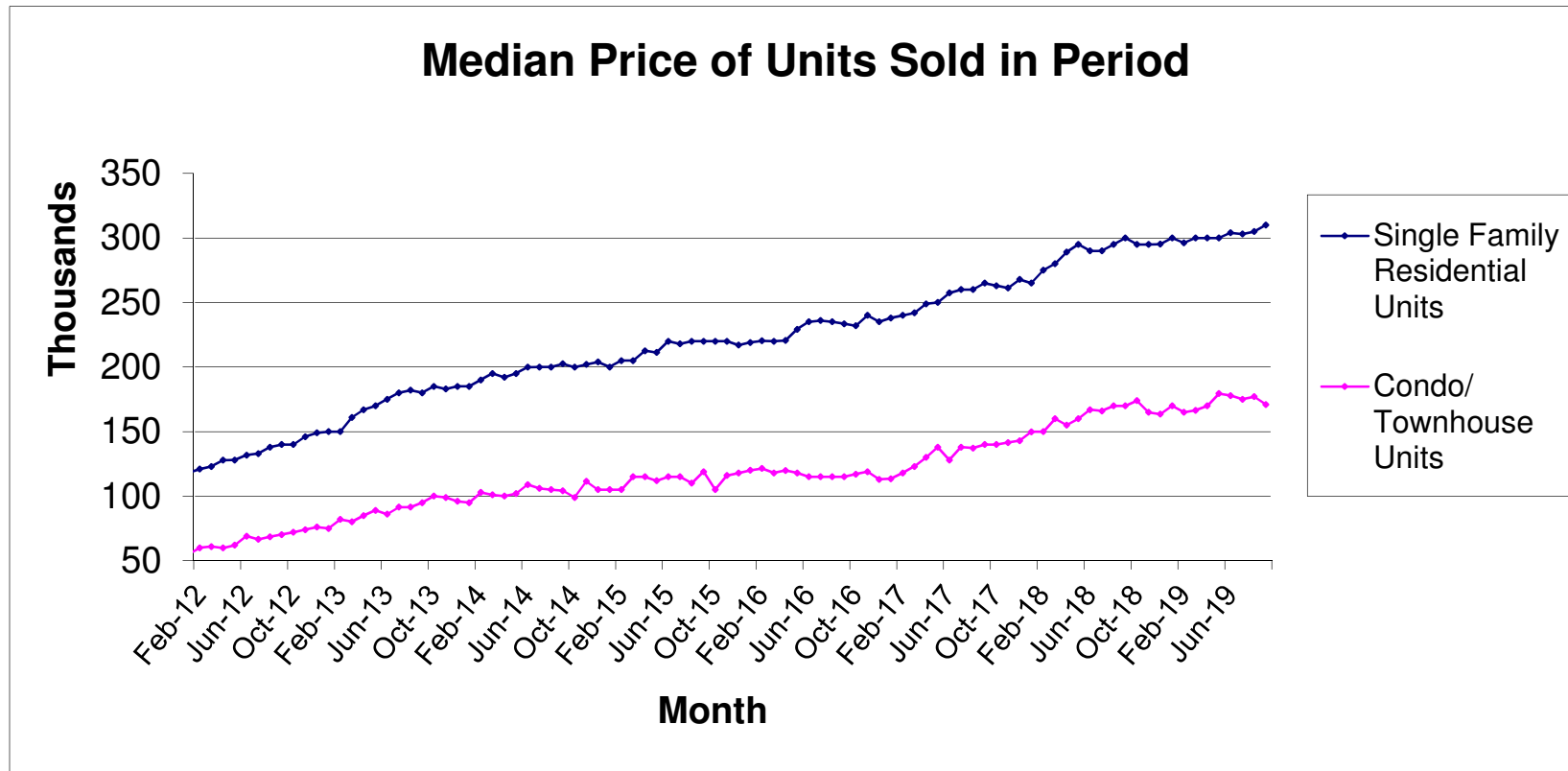
Source: Greater Las Vegas Association of REALTORS®

DISCLAIMER: This data is based on information from the Greater Las Vegas Association of REALTORS® (GLVAR) Multiple Listing Service (MLS). This information is deemed reliable but is not guaranteed. MLS collects, compiles and distributes information about homes listed for sale by its subscribers who are real estate agents. MLS subscription is available to all real estate agents licensed in Nevada, but is not available to the general public. Not all licensed agents subscribe to the MLS. MLS does not include all new homes available or listings from non-MLS agents, nor does it include properties for sale by owner. The territorial jurisdiction of the GLVAR as a member of the National Association of REALTORS® includes Clark, Nye, White Pine and Lincoln Counties, Nevada, and such other areas as from time to time may be allocated to the GLVAR by the Board of Directors of the National Association of REALTORS®.



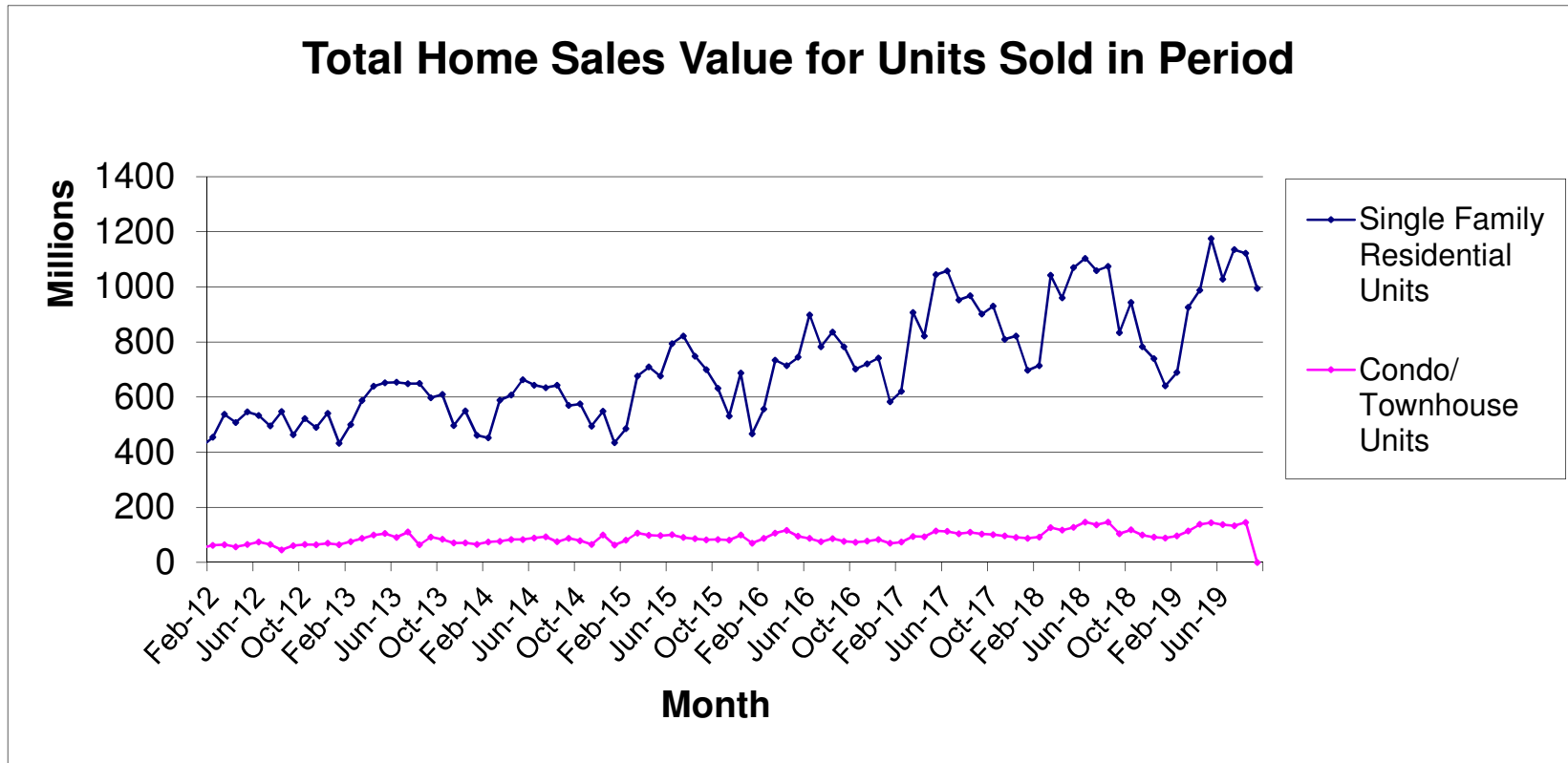
Source: Greater Las Vegas Association of REALTORS®

DISCLAIMER: This data is based on information from the Greater Las Vegas Association of REALTORS® (GLVAR) Multiple Listing Service (MLS). This information is deemed reliable but is not guaranteed. MLS collects, compiles and distributes information about homes listed for sale by its subscribers who are real estate agents. MLS subscription is available to all real estate agents licensed in Nevada, but is not available to the general public. Not all licensed agents subscribe to the MLS. MLS does not include all new homes available or listings from non-MLS agents, nor does it include properties for sale by owner. The territorial jurisdiction of the GLVAR as a member of the National Association of REALTORS® includes Clark, Nye, White Pine and Lincoln Counties, Nevada, and such other areas as from time to time may be allocated to the GLVAR by the Board of Directors of the National Association of REALTORS®.



Source: Greater Las Vegas Association of REALTORS®

DISCLAIMER: This data is based on information from the Greater Las Vegas Association of REALTORS® (GLVAR) Multiple Listing Service (MLS). This information is deemed reliable but is not guaranteed. MLS collects, compiles and distributes information about homes listed for sale by its subscribers who are real estate agents. MLS subscription is available to all real estate agents licensed in Nevada, but is not available to the general public. Not all licensed agents subscribe to the MLS. MLS does not include all new homes available or listings from non-MLS agents, nor does it include properties for sale by owner. The territorial jurisdiction of the GLVAR as a member of the National Association of REALTORS® includes Clark, Nye, White Pine and Lincoln Counties, Nevada, and such other areas as from time to time may be allocated to the GLVAR by the Board of Directors of the National Association of REALTORS®.



Source: Greater Las Vegas Association of REALTORS®

DISCLAIMER: This data is based on information from the Greater Las Vegas Association of REALTORS® (GLVAR) Multiple Listing Service (MLS). This information is deemed reliable but is not guaranteed. MLS collects, compiles and distributes information about homes listed for sale by its subscribers who are real estate agents. MLS subscription is available to all real estate agents licensed in Nevada, but is not available to the general public. Not all licensed agents subscribe to the MLS. MLS does not include all new homes available or listings from non-MLS agents, nor does it include properties for sale by owner. The territorial jurisdiction of the GLVAR as a member of the National Association of REALTORS® includes Clark, Nye, White Pine and Lincoln Counties, Nevada, and such other areas as from time to time may be allocated to the GLVAR by the Board of Directors of the National Association of REALTORS®.