



Greater Las Vegas Association of REALTORS® November 2019 Statistics

| | Single Family Residential Units | | | Condo/Townhouse Units | | |
|---|---------------------------------|--------------------|--------------------|-----------------------|--------------------|--------------------|
| | Nov 19 | Change from Oct 19 | Change from Nov 18 | Nov 19 | Change from Oct 19 | Change from Nov 18 |
| AVAILABILITY AT END OF PERIOD | | | | | | |
| # of available units listed | 10,409 | -6.9% | +0.6% | 2,625 | -3.3% | +10.3% |
| Median list price of available units | \$ 335,000 | +0.0% | +1.5% | 175,000 | +0.0% | +5.5% |
| Average list price of available units | \$ 500,061 | +1.5% | +4.9% | 202,099 | +0.0% | +6.1% |
| *AVAILABILITY AT END OF PERIOD | | | | | | |
| | Nov 19 | Change from Oct 19 | Change from Nov 18 | Nov 19 | Change from Oct 19 | Change from Nov 18 |
| # of available units listed w/o offers | 6,531 | -9.4% | -6.7% | 1,711 | -5.4% | +6.6% |
| Median list price of available units w/o offers | \$ 350,000 | +0.0% | +1.4% | \$ 174,500 | +1.5% | +5.8% |
| Average list price of available units w/o offers | \$ 564,929 | +2.8% | +6.4% | \$ 203,088 | -0.1% | +6.1% |
| NEW LISTINGS THIS PERIOD | | | | | | |
| | Nov 19 | Change from Oct 19 | Change from Nov 18 | Nov 19 | Change from Oct 19 | Change from Nov 18 |
| # of new listings | 2,652 | -25.2% | -17.7% | 701 | -17.3% | -5.3% |
| Median price of new listings | \$ 320,000 | -1.5% | +3.2% | \$ 184,900 | +2.7% | +8.8% |
| Average price of new listings | \$ 407,000 | -1.5% | +0.8% | \$ 201,371 | -1.9% | +8.3% |
| UNITS SOLD THIS PERIOD | | | | | | |
| | Nov 19 | Change from Oct 19 | Change from Nov 18 | Nov 19 | Change from Oct 19 | Change from Nov 18 |
| # of units sold | 2,407 | -17.0% | +5.0% | 539 | -19.8% | -4.6% |
| Median price of units sold | \$ 307,000 | +0.0% | +4.1% | \$ 175,000 | +2.2% | +6.1% |
| Average price of units sold | \$ 365,397 | +2.6% | +7.0% | \$ 188,169 | -0.6% | +7.4% |
| TIME ON MARKET FOR UNITS SOLD THIS PERIOD | | | | | | |
| | Nov 19 | Oct 19 | Nov 18 | Nov 19 | Oct 19 | Nov 18 |
| 0-30 days | 51.4% | 52.6% | 60.3% | 53.1% | 49.9% | 61.1% |
| 31-60 days | 21.9% | 21.8% | 22.1% | 21.7% | 19.9% | 24.2% |
| 61-90 days | 11.3% | 11.4% | 10.0% | 10.2% | 14.1% | 9.2% |
| 91-120 days | 7.1% | 6.6% | 3.3% | 6.5% | 8.3% | 2.7% |
| 121+ days | 8.4% | 7.6% | 4.3% | 8.5% | 7.7% | 2.8% |
| TOTAL HOME SALES DOLLAR VALUE FOR UNITS SOLD THIS PERIOD | | | | | | |
| | Nov 19 | Change from Oct 19 | Change from Nov 18 | Nov 19 | Change from Oct 19 | Change from Nov 18 |
| | \$ 879,511,457 | -14.8% | +12.4% | \$ 101,423,064 | -20.2% | +2.5% |

***This category reflects the existing market availability of listings without pending or contingent offers.**

Source: Greater Las Vegas Association of REALTORS®

DISCLAIMER: This data is based on information from the Greater Las Vegas Association of REALTORS® (GLVAR) Multiple Listing Service (MLS). This information is deemed reliable but is not guaranteed. MLS collects, compiles and distributes information about homes listed for sale by its subscribers who are real estate agents. MLS subscription is available to all real estate agents licensed in Nevada, but is not available to the general public. Not all licensed agents subscribe to the MLS. MLS does not include all new homes available or listings from non-MLS agents, nor does it include properties for sale by owner. The territorial jurisdiction of the GLVAR as a member of the National Association of REALTORS® includes Clark, Nye, Lincoln and White Pine Counties, Nevada, and such other areas as from time to time may be allocated to the GLVAR by the Board of Directors of the National Association of REALTORS®.



Greater Las Vegas Association of REALTORS® November 2019 Statistics

Sold Units Statistics by Area (see map)

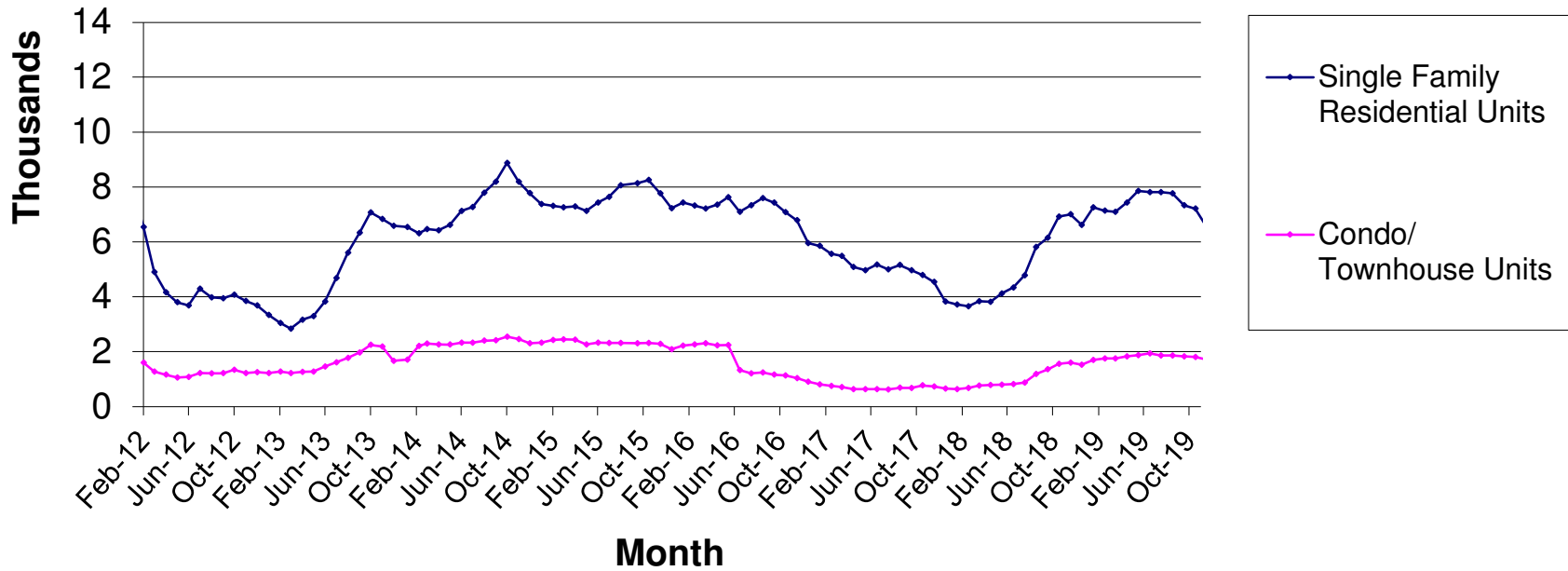
| Area | Single Family Residential Units | | | Condo/Townhouse Units | | |
|---|---------------------------------|-------------------|--------------------|-----------------------|-------------------|--------------------|
| | # of units sold | Median Sold Price | Average Sold Price | # of units sold | Median Sold Price | Average Sold Price |
| 101 - North | 25 | \$203,000 | \$211,508 | 1 | \$145,000 | \$145,000 |
| 102 - North | 145 | \$323,000 | \$370,346 | 4 | \$232,250 | \$248,625 |
| 103 - North | 286 | \$288,500 | \$295,344 | 21 | \$210,000 | \$202,960 |
| 201 - East | 37 | \$190,000 | \$188,886 | 4 | \$86,000 | \$138,250 |
| 202 - East | 68 | \$210,450 | \$214,678 | 14 | \$99,000 | \$111,171 |
| 203 - East | 41 | \$238,000 | \$256,132 | 11 | \$124,500 | \$133,593 |
| 204 - East | 109 | \$245,000 | \$247,444 | 23 | \$122,000 | \$134,552 |
| 301 - South | 46 | \$250,500 | \$278,062 | 46 | \$158,500 | \$149,111 |
| 302 - South | 51 | \$260,000 | \$302,994 | 35 | \$127,000 | \$135,780 |
| 303 - South | 104 | \$293,000 | \$331,726 | 20 | \$198,500 | \$205,611 |
| 401 - North West | 14 | \$308,950 | \$430,886 | 8 | \$105,000 | \$102,688 |
| 402 - North West | 68 | \$232,250 | \$242,867 | 22 | \$127,700 | \$135,764 |
| 403 - North West | 66 | \$287,500 | \$310,373 | 44 | \$166,000 | \$177,548 |
| 404 - North West | 117 | \$408,000 | \$506,515 | 30 | \$262,500 | \$269,344 |
| 405 - North West | 188 | \$320,000 | \$381,634 | 29 | \$210,000 | \$201,738 |
| 501 - South West | 31 | \$314,900 | \$343,006 | 31 | \$160,000 | \$163,029 |
| 502 - South West | 114 | \$380,000 | \$632,262 | 31 | \$197,000 | \$296,843 |
| 503 - South West | 97 | \$335,000 | \$383,137 | 46 | \$195,000 | \$201,630 |
| 504 - South West | 133 | \$305,500 | \$332,544 | 10 | \$178,500 | \$172,090 |
| 505 - South West | 150 | \$337,163 | \$439,465 | 7 | \$240,000 | \$240,614 |
| 601 - Henderson | 26 | \$334,950 | \$371,646 | 14 | \$203,500 | \$192,179 |
| 602 - Henderson | 87 | \$340,000 | \$403,479 | 24 | \$207,250 | \$216,252 |
| 603 - Henderson | 43 | \$335,000 | \$442,014 | 12 | \$206,050 | \$231,917 |
| 604 - Henderson | 39 | \$290,000 | \$314,274 | 4 | \$203,500 | \$197,125 |
| 605 - Henderson | 74 | \$323,950 | \$337,705 | 20 | \$204,000 | \$192,876 |
| 606 - Henderson | 167 | \$415,000 | \$518,930 | 17 | \$271,500 | \$243,344 |
| 701 - Boulder City | 12 | \$321,500 | \$331,625 | 4 | \$178,500 | \$183,750 |
| 702 - Boulder City | 2 | \$433,550 | \$433,550 | 2 | \$226,500 | \$226,500 |
| 800 - Mesquite | - | \$0 | \$0 | - | \$0 | \$0 |
| 801 - Muddy River (Moapa, Glendale, Logandale, Overton) | 4 | \$262,500 | \$277,500 | - | \$0 | \$0 |
| 802 - Mt. Charleston/Lee Canyon | 2 | \$434,250 | \$434,250 | - | \$0 | \$0 |
| 803 - Indian Springs/Cold Creek | 3 | \$268,000 | \$268,000 | - | \$0 | \$0 |
| 804 - Mountain Springs | - | \$0 | \$0 | - | \$0 | \$0 |
| 805 - Blue Diamond | - | \$0 | \$0 | - | \$0 | \$0 |
| 806 - State Line/Jean/Goodspings | - | \$0 | \$0 | - | \$0 | \$0 |
| 807 - Sandy Valley | - | \$0 | \$0 | - | \$0 | \$0 |
| 808 - Laughlin | - | \$0 | \$0 | 4 | \$76,250 | \$101,850 |
| 809 - Other Clark County | 1 | \$331,000 | \$331,000 | 1 | \$94,999 | \$94,999 |
| 810 - Pahrump | 48 | \$270,500 | \$273,532 | - | \$0 | \$0 |
| 811 - Nye County | - | \$0 | \$0 | - | \$0 | \$0 |
| 812 - Lincoln County | 1 | \$59,714 | \$59,714 | - | \$0 | \$0 |
| 813 - Other Nevada | - | \$0 | \$0 | - | \$0 | \$0 |
| 814 - Amargosa Valley | - | \$0 | \$0 | - | \$0 | \$0 |
| 815 - Beatty | - | \$0 | \$0 | - | \$0 | \$0 |
| 816 - White Pine County | 6 | \$81,750 | \$150,924 | - | \$0 | \$0 |
| 817 - Searchlight | 2 | \$167,500 | \$167,500 | - | \$0 | \$0 |
| 900 - Outside Nevada | 1 | \$525,000 | \$525,000 | - | \$0 | \$0 |

Source: Greater Las Vegas Association of REALTORS®

DISCLAIMER: This data is based on information from the Greater Las Vegas Association of REALTORS® (GLVAR) Multiple Listing Service (MLS). This information is deemed reliable but is not guaranteed. MLS collects, compiles and distributes information about homes listed for sale by its subscribers who are real estate agents. MLS subscription is available to all real estate agents licensed in Nevada, but is not available to the general public. Not all licensed agents subscribe to the MLS. MLS does not include all new homes available or listings from non-MLS agents, nor does it include properties for sale by owner. The territorial jurisdiction of the GLVAR as a member of the National Association of REALTORS® includes Clark, Nye, Lincoln and White Pine Counties, Nevada, and such other areas as from time to time may be allocated to the GLVAR by the Board of Directors of the National Association of REALTORS®.

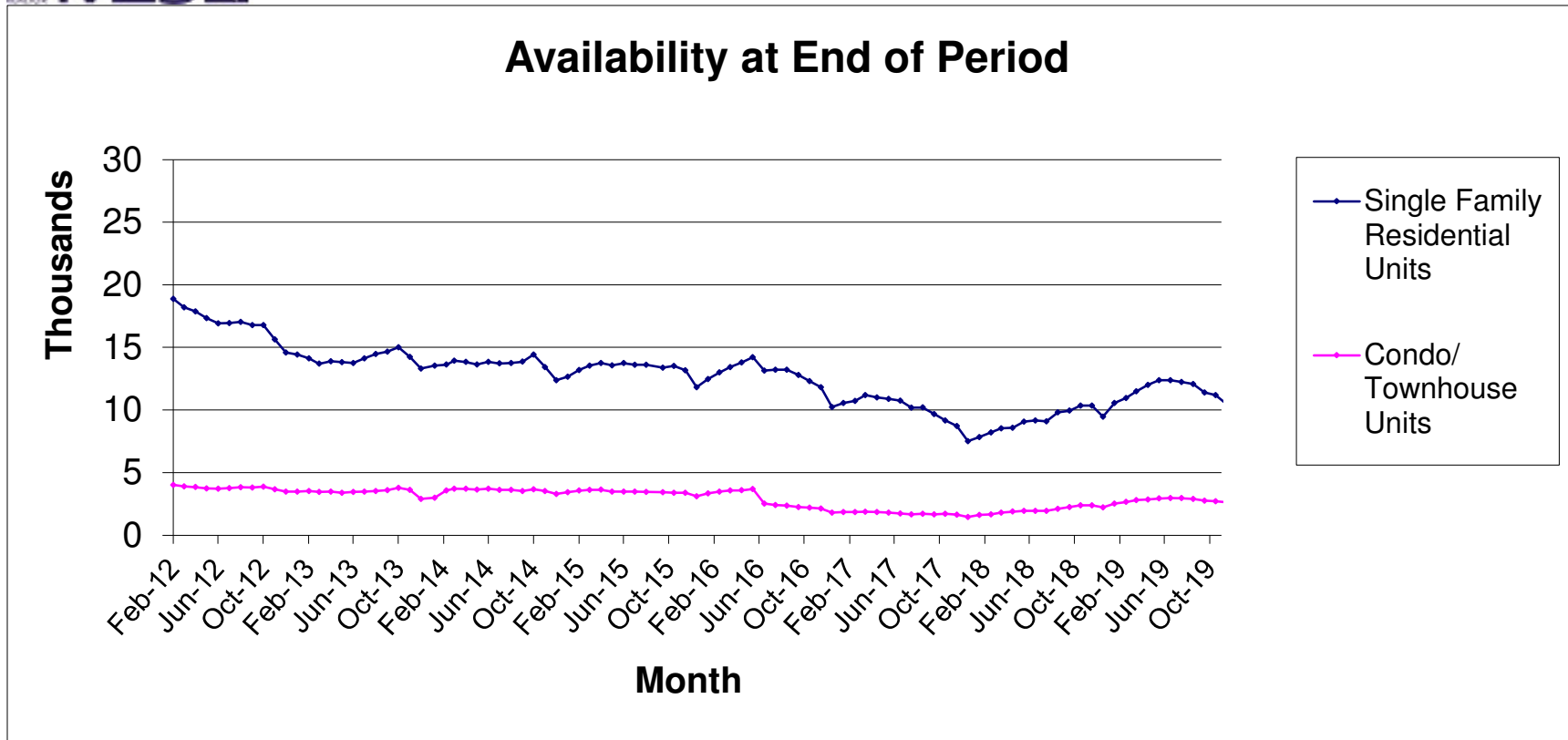


Availability Without Pending Or Contingent Offers End Of Period



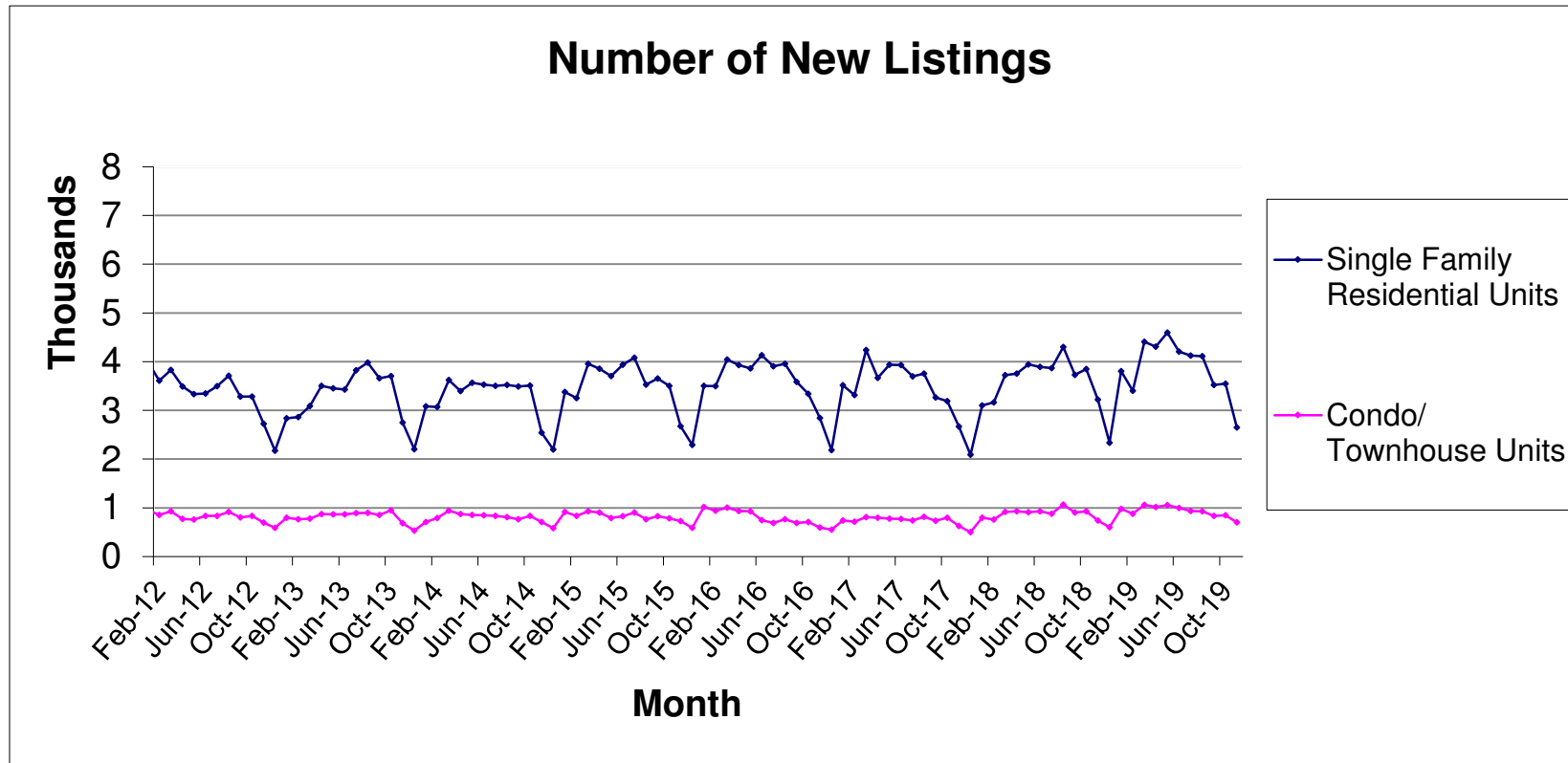
Source: Greater Las Vegas Association of REALTORS®

DISCLAIMER: This data is based on information from the Greater Las Vegas Association of REALTORS® (GLVAR) Multiple Listing Service (MLS). This information is deemed reliable but is not guaranteed. MLS collects, compiles and distributes information about homes listed for sale by its subscribers who are real estate agents. MLS subscription is available to all real estate agents licensed in Nevada, but is not available to the general public. Not all licensed agents subscribe to the MLS. MLS does not include all new homes available or listings from non-MLS agents, nor does it include properties for sale by owner. The territorial jurisdiction of the GLVAR as a member of the National Association of REALTORS® includes Clark, Nye, White Pine and Lincoln Counties, Nevada, and such other areas as from time to time may be allocated to the GLVAR by the Board of Directors of the National Association of REALTORS®.



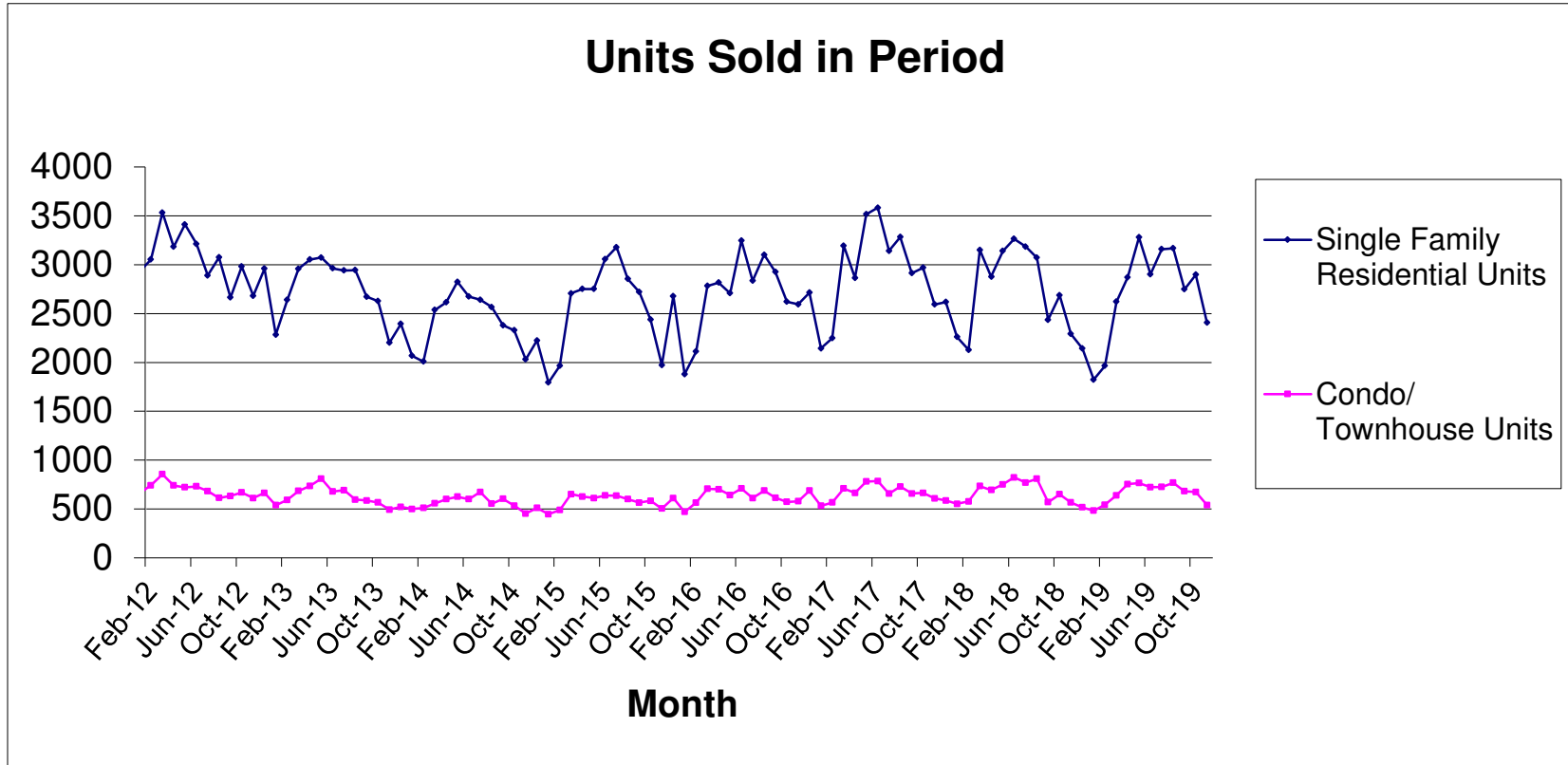
Source: Greater Las Vegas Association of REALTORS®

DISCLAIMER: This data is based on information from the Greater Las Vegas Association of REALTORS® (GLVAR) Multiple Listing Service (MLS). This information is deemed reliable but is not guaranteed. MLS collects, compiles and distributes information about homes listed for sale by its subscribers who are real estate agents. MLS subscription is available to all real estate agents licensed in Nevada, but is not available to the general public. Not all licensed agents subscribe to the MLS. MLS does not include all new homes available or listings from non-MLS agents, nor does it include properties for sale by owner. The territorial jurisdiction of the GLVAR as a member of the National Association of REALTORS® includes Clark, Nye, White Pine and Lincoln Counties, Nevada, and such other areas as from time to time may be allocated to the GLVAR by the Board of Directors of the National Association of REALTORS®.



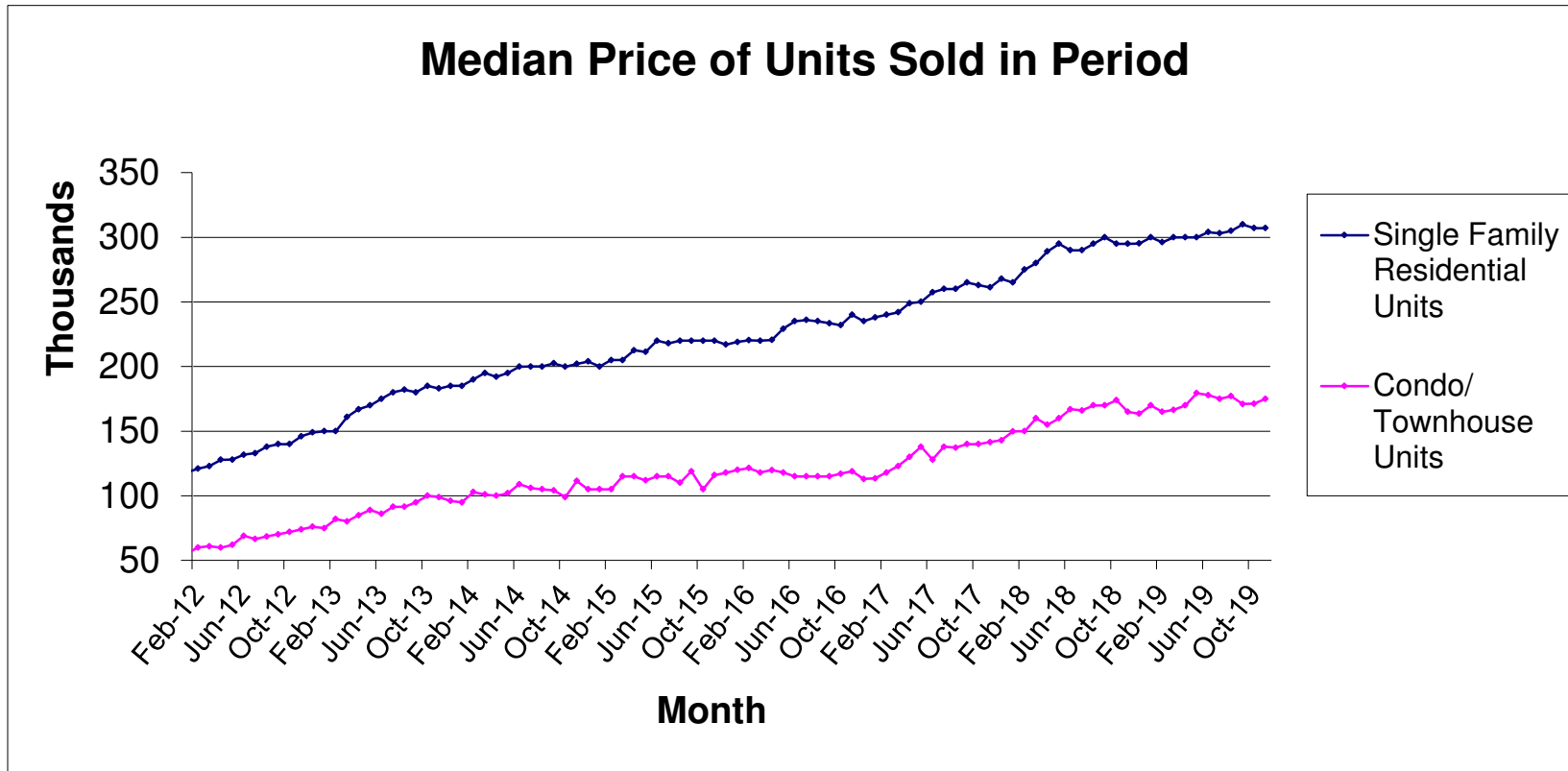
Source: Greater Las Vegas Association of REALTORS®

DISCLAIMER: This data is based on information from the Greater Las Vegas Association of REALTORS® (GLVAR) Multiple Listing Service (MLS). This information is deemed reliable but is not guaranteed. MLS collects, compiles and distributes information about homes listed for sale by its subscribers who are real estate agents. MLS subscription is available to all real estate agents licensed in Nevada, but is not available to the general public. Not all licensed agents subscribe to the MLS. MLS does not include all new homes available or listings from non-MLS agents, nor does it include properties for sale by owner. The territorial jurisdiction of the GLVAR as a member of the National Association of REALTORS® includes Clark, Nye, White Pine and Lincoln Counties, Nevada, and such other areas as from time to time may be allocated to the GLVAR by the Board of Directors of the National Association of REALTORS®.



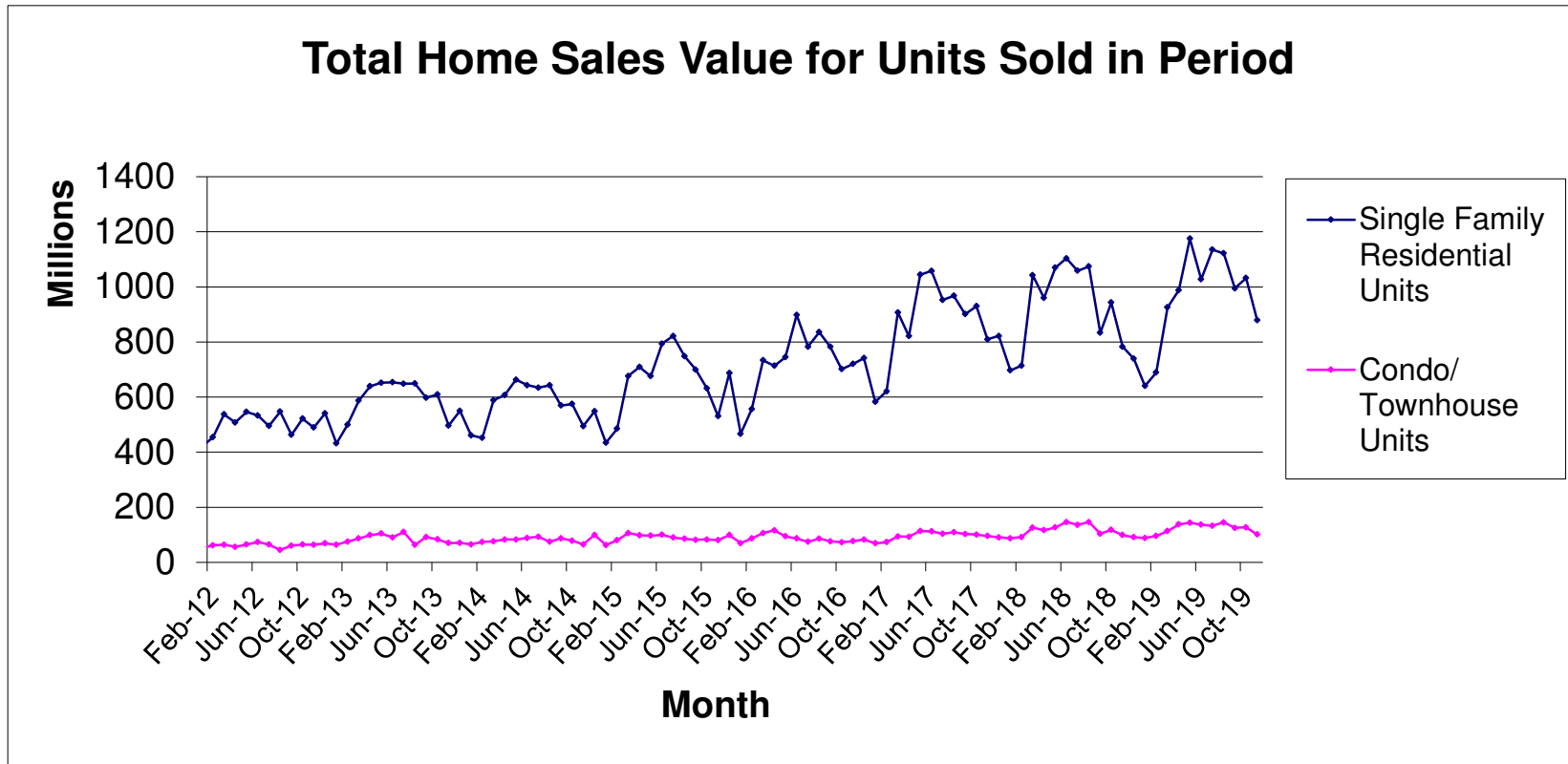
Source: Greater Las Vegas Association of REALTORS®

DISCLAIMER: This data is based on information from the Greater Las Vegas Association of REALTORS® (GLVAR) Multiple Listing Service (MLS). This information is deemed reliable but is not guaranteed. MLS collects, compiles and distributes information about homes listed for sale by its subscribers who are real estate agents. MLS subscription is available to all real estate agents licensed in Nevada, but is not available to the general public. Not all licensed agents subscribe to the MLS. MLS does not include all new homes available or listings from non-MLS agents, nor does it include properties for sale by owner. The territorial jurisdiction of the GLVAR as a member of the National Association of REALTORS® includes Clark, Nye, White Pine and Lincoln Counties, Nevada, and such other areas as from time to time may be allocated to the GLVAR by the Board of Directors of the National Association of REALTORS®.



Source: Greater Las Vegas Association of REALTORS®.

DISCLAIMER: This data is based on information from the Greater Las Vegas Association of REALTORS® (GLVAR) Multiple Listing Service (MLS). This information is deemed reliable but is not guaranteed. MLS collects, compiles and distributes information about homes listed for sale by its subscribers who are real estate agents. MLS subscription is available to all real estate agents licensed in Nevada, but is not available to the general public. Not all licensed agents subscribe to the MLS. MLS does not include all new homes available or listings from non-MLS agents, nor does it include properties for sale by owner. The territorial jurisdiction of the GLVAR as a member of the National Association of REALTORS® includes Clark, Nye, White Pine and Lincoln Counties, Nevada, and such other areas as from time to time may be allocated to the GLVAR by the Board of Directors of the National Association of REALTORS®.



Source: Greater Las Vegas Association of REALTORS®

DISCLAIMER: This data is based on information from the Greater Las Vegas Association of REALTORS® (GLVAR) Multiple Listing Service (MLS). This information is deemed reliable but is not guaranteed. MLS collects, compiles and distributes information about homes listed for sale by its subscribers who are real estate agents. MLS subscription is available to all real estate agents licensed in Nevada, but is not available to the general public. Not all licensed agents subscribe to the MLS. MLS does not include all new homes available or listings from non-MLS agents, nor does it include properties for sale by owner. The territorial jurisdiction of the GLVAR as a member of the National Association of REALTORS® includes Clark, Nye, White Pine and Lincoln Counties, Nevada, and such other areas as from time to time may be allocated to the GLVAR by the Board of Directors of the National Association of REALTORS®.